

**Noguchi Ken Growing Forests in the Himalayas (Nepal)**

The forests of Nepal are recovering. Thank you for your cooperation!



Partner: Peak Aid NPO

**Red Pine Forest Regeneration**

With your help, care of the red pine forests of Ina City in Nagano Prefecture is progressing and the forest has recovered.



Partner: Laboratory of Earth-Conscious Life (NPO)

**Coastal reforestation of Kujukuri Beach to its pre-earthquake condition**

We are now in a position to further the regeneration of the coastal forest of Kujukuri Beach. Thank you!

**The C.W. Nicol Afan Woodland, and growing forests in Higashi Matsushima**

The trees have been thinned and the forest has become lighter and brighter. The creatures of the forest are also delighted!



Partner: C.W. Nicol Afan Woodland Trust

**Seed Planting School returning former golf course to forest land**

We received donations of saplings from over 1000 people and they are thriving.



Partner: Furano Seed Planting School (LLP)

**Growing forests with resilience against abnormal weather (Philippines)**

Formerly bare mountains are gradually recovering and returning to natural forest inhabited by small birds and butterflies. Thank you for your kind support as always.



Partner: OISCA (NPO)

**A ten-year coastal forest regeneration plan (Miyagi)**

Reforestation of pine forests is progressing across 100ha of land including the Yuriage District in the city of Natori in Miyagi Prefecture. The trees were grown from tiny 2 mm seeds, and the largest black pine is now 220 cm tall.



Partner: OISCA (NPO)

**Planting trees to protect the sea The Sea is Longing for the Forest**

The "The Sea is Longing for the Forest Tree Planting Festival" which has continued since 1989, was held again this year.



Partner: The Sea is Longing for the Forest (NPO)

**Working with horses to preserve the Tsuru satoyama (village forest)**

We have thinned the forest in the Tsuru district and have started using the timber from the felled trees. This contribution to prevention of global warming is thanks to our Eco Cardholders.



Partner: Tsuru Environment Forum (NPO)

**South Pacific Countries Support Project (Tuvalu)**

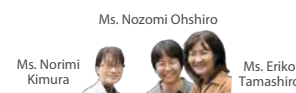
We have been able to plant 10,000 mangrove trees on Tuvalu.



Partner: Tuvalu Overview (NPO)

**South Pacific Countries Support Project (Kiribati)**

The mangroves that we planted with your support are growing well.



Partner: International Society for Mangrove Ecosystems (NPO)

**Tropical Rainforest Conservation (Papua New Guinea)**

Tropical rain forests have been protected and are regenerating. Farmers have been given hope for their present and future.



Partner: OISCA (NPO)

**Tropical Rainforest Conservation (Solomon Islands)**

Despite numerous difficulties as a result of a huge earthquake, we have overcome many challenges. Thank you to everyone for your support!



Partner: APSD (NPO)

**Protecting and regenerating the forests of the Mount Fuji world heritage site**

We have taken a vital first step towards regenerating the natural forests of Mount Fuji so that we can leave a beautiful Mount Fuji to coming generations. We look forward to your continued support.



Partner: Mt Fuji Club (NPO)

# Thank you Newsletter

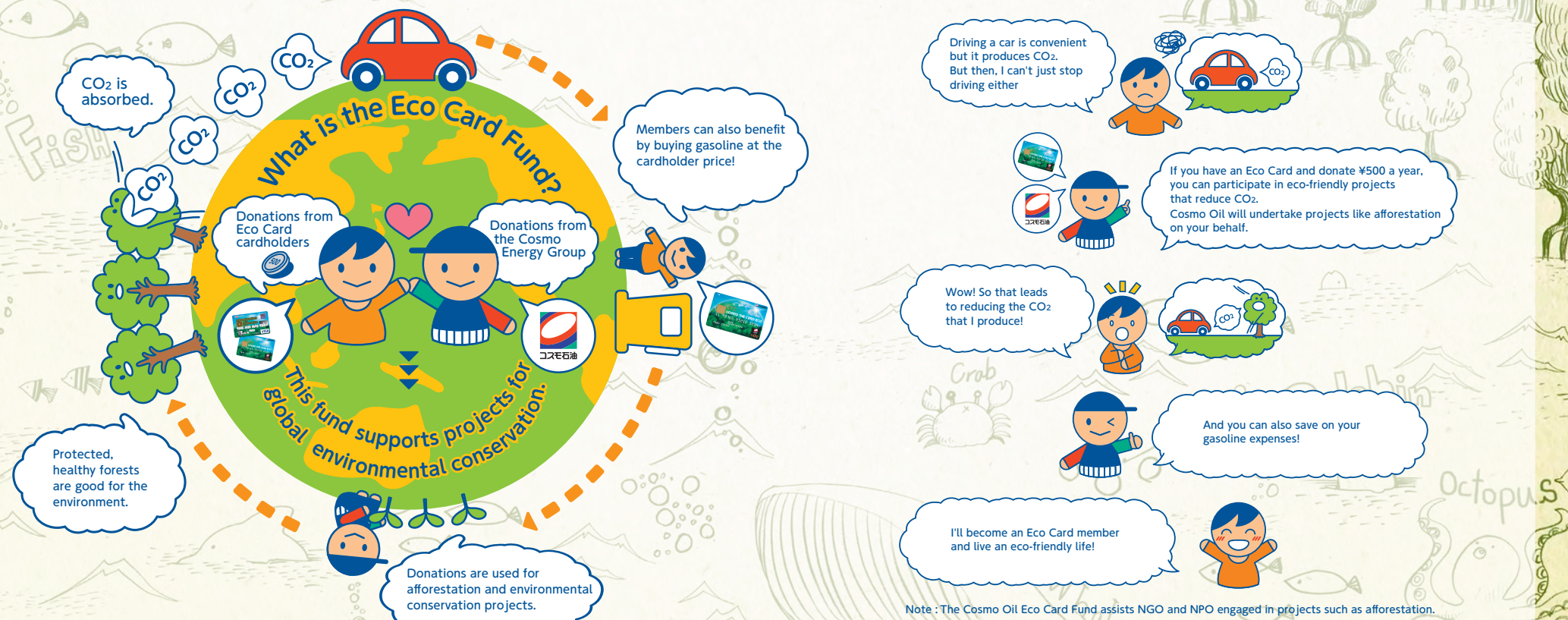
## 2017

### Activity Report

15th fiscal year: April 1, 2016 - March 31, 2017

We would like to express our gratitude to all Eco Cardholders for your support over the last year. Your donations assist the activities of a wide range of projects and we have received numerous messages of appreciation both from Japan and overseas. We look forward to your continued support of the Eco Card Fund.

## Structure of the Eco Card Fund



# Project Report for FY 2016

Your support is appreciated in Japan and around the world!



ありがとう!



## Solomon Islands and Papua New Guinea Tropical Rainforest Conservation

Supporting local people with the aim of balancing tropical rainforest conservation with economic growth.

In the Solomon Islands and Papua New Guinea, in order to protect the rainforests from logging companies, we are fostering awareness to enable coexistence with nature while leveraging this natural asset, and fostering industries. As specific examples, we are conducting training programs with the locals to establish stationary organic farming, and at a local vocational training school we are organizing a tree planting program. Further, we are planning to set up shops so as to convert the products derived from these activities into cash.

▼Solomon Islands



Partner: APSD (NPO)

▼Papua New Guinea



Partner: OISCA (NPO)

Tree planting preparation  
4,000m<sup>2</sup>

Registered as a Tropical Rainforest Conservation Area  
38,000ha

Ko rabw!



fakafetai!



## Republic of Kiribati, and Tuvalu South Pacific Countries Support

Planting mangrove saplings to protect the coastline of small islands.

There are small islands scattered around the South Pacific Ocean that are susceptible to the effects of global warming. The Eco Card Fund has supported such countries for many years. In the last fiscal year also, we have planted mangroves capable of growing in seawater, in the Republic of Kiribati, and Tuvalu. In addition to minimizing damage from high waves produced by king tides and hurricanes, the growth of these trees will also absorb large quantities of CO<sub>2</sub>. These trees form a breakwater for global warming.

▼Republic of Kiribati



Partner: International Society for Mangrove Ecosystems (NPO)

▼Tuvalu



Partner: Tuvalu Overview (NPO)

Mangrove planting  
10,216saplings

Mangrove planting  
4,200saplings

FY 2016 Results

## Nepal Noguchi Ken Growing Forests in the Himalayas (Nepal)

Planting saplings grown from seeds to regenerate devastated forests at an altitude of 3,600m.

The village of Sama in Nepal is now dilapidated due to excessive logging. Partly because Sherpas (mountain-eering guides essential for climbing in the Himalayas), live here, a project has commenced which is coordinated by the alpinist Ken Noguchi. Currently, in co-operation with Nepalese botanists, saplings of trees to be planted are being carefully grown from seeds, and this activity is continuing with a view to planting in the next financial year.



Partner: Peak Aid (NPO)

No. saplings being cultivated  
3,000saplings

## Philippines Growing forests resilient to abnormal weather

Planting and managing saplings in cooperation with locals.

Here in the Philippines also, an increasing number of mountains are suffering from logging of forests and are no longer able to stem the effects of large-scale typhoons. The Eco Card Fund supports activities to plant strong, wind- and drought-resistant trees. Apart from 6,100 trees of indigenous species, we have grown saplings of 950 fruit trees which will also enrich people's lives, and out of those we have planted 7,000. We are also conducting grassroots activities which include training programs for locals to increase their environmental awareness.



Partner: OISCA (NPO)

Trees planted  
7,000trees

## Miyagi The Sea is Longing for the Forest is planting trees to protect the sea

Numerous visitors feel a bond with the forest and sea through the Tree Planting Festival.

At this point in time, six years after the Great East Japan Earthquake, the sea is regaining its abundance. We held a Tree Planting Festival in June to make as many people as possible aware of the vital link between the sea and forests, an essential part of its recovery. On the day, we had as many as 1,500 visitors and planted 1,600 tree saplings. We communicated via social media such as SNS to further publicize this activity and received as many as 19,000 hits.



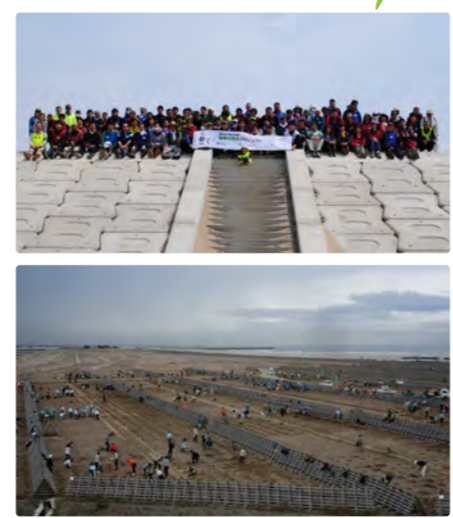
Partner: The Sea is Longing for the Forest (NPO)

Tree planting  
1,600trees

## Miyagi A ten-year coastal forest regeneration plan

Creating a coastal forest to assist developmental reconstruction after the Great East Japan Earthquake.

The tsunami which accompanied the 2011 earthquake disaster devastated the coastal forest which had acted as a sand-break. A project was started to plant black pines to revive this 1.5 ha sand-break forest which protected locals from strong winds and blown sand. Our Eco Card Fund is supporting part of this, and overall, just during the last fiscal year, an area of 11 ha has been planted with trees. The total forest cultivation area has now reached 37 ha which is 8 times the area of the Tokyo Dome. This project, which draws on the collective strength of 1,786 volunteers, is highly regarded, and sees a succession of visits from dignitaries such as the Governor of Miyagi Prefecture.



Partner: OISCA (NPO)

Black pine planting  
1.5ha

## Hokkaido Seed Planting School returning former golf course to forest land

Last year also, saplings grown from seeds are thriving in this northern land.

This is a project that involves collecting seeds and seedlings (trees that have just germinated) from the forest, growing them into saplings and then donating them to organizations which plant them within the prefecture. We have been able to deliver 8,530 saplings to organizations such as the Furano Seed Planting School. And again this year, as part of the Cosmo Oil Eco Tour's "Visiting Day", we were able to conduct a seedling cultivation experience with Eco Cardholders. We were also able to observe the progress of the former golf course as it returns to forest.



Partner: Furano Seed Planting School (LLP)

Saplings cultivated  
8,530saplings

## Chiba Returning the coastal forest of Kujukuri Beach to its pre-disaster state

Start of a project to revive the disaster-prevention forest which was devastated in the Great East Japan Earthquake.

It is not well-known that the coastline of Chiba Prefecture was damaged in the Great East Japan Earthquake. However, the disaster-prevention forest, flattened by the tsunami, can be seen everywhere. Planting of black pines and their care have been carried out with the cooperation of volunteers. There have been numerous comments from participants to the effect that they did not know that Chiba Prefecture also suffered damage, and that they were looking forward to next year's tree planting.



Partner: Laboratory of Earth-Conscious Life (NPO)

Black pine tree planting  
2,000m<sup>2</sup>

## Yamanashi Working with horses to preserve the Tsuru satoyama (village forest)

Thinning satoyama trees to allow the forest to exhibit its innate strength.

Tsuru in Yamanashi Prefecture is located to the north-east of Mount Fuji. A project is underway to preserve its satoyama (village forest) which covers a massive area about three times the size of Tokyo Dome. Tree thinning has been undertaken to enable the satoyama to demonstrate its full CO<sub>2</sub> absorption capacity, and the felled trees resulting from that work are being converted to commercial firewood. We are also utilizing horse power as one of our endeavors that is not reliant on fossil fuel. These horses naturally work ploughing fields and carrying loads, and their manure is also being used as fertilizer.



Partner: Tsuru Environment Forum (NPO)

Satoyama maintenance  
15ha

## Shizuoka Protecting and regenerating the forests of the Mount Fuji world heritage site

Creating a world-class forest through grass cutting and tree thinning.

We are undertaking two activities to ensure that the Mount Fuji forests continue to be in a state befitting a World Heritage Site. One is a project to nurture a hardwood forest planted in 2012. This year we conducted four grass-cutting working parties to create an environment that facilitates growth of the planted trees. The other project is growing the Nishiusuzuka Agreement Forest. This forest is being maintained through activities such as tree thinning to aid recovery after the fallen trees caused by the massive typhoon which struck in 1996.



Partner: The Mt Fuji Club (MPO)

Forest maintenance  
6,000m<sup>2</sup>

## Nagano and Miyagi The C.W. Nicol Afan Woodland and growing forests in Higashi Matsushima

Creating a forest that is resilient against repeated bad weather, and that readily absorb CO<sub>2</sub>.

Thinning and pruning of Quercus serrata trees has been implemented over approximately 11 ha in the Afan Woodland. Maintenance has resulted in an environment that facilitates tree growth and greater absorption of CO<sub>2</sub>. As part of an effort not to use fossil fuels, the thinned trees have been carted out using real horsepower. Further, under a project in Higashi Matsushima, forests that were left unattended after the Great East Japan Earthquake are being regenerated, and training activities undertaken. In addition to cutting out bamboo and underbrush, the symbolic tree house has also been restored.



Partner: C.W. Nicol Afan Woodland Trust

Forest maintenance  
11ha

## Nagano Red Pine Forest Regeneration

Forest maintenance with 40participants. Creating an amenable environment for growth of wild mushrooms.

A lack of resources to care for the red pine forest of Ina City in Nagano Prefecture meant that the forest could not exhibit its natural function. To restore the forest to its former health, over the past year 48 volunteers have maintained 4ha of forest. As a result of activities conducted over 3 years there is now increased potential for the growth of edible mushrooms such as shimeji mushrooms, and a biodiversity survey has also confirmed steady progress.



Partner: Laboratory of Earth-Conscious Life (NPO)

Regenerated area  
4ha



## Fiscal 2017 New Project Started

The Eco Card Fund has selected a new support project with the aim of reducing CO<sub>2</sub>. Your donations will continue to be of help.

### Satoyama preservation by local residents in Kamiyama-a Return to Forest Project

TOKUSHIMA  
OISCA (NPO)



In Kamiyama located in Tokushima Prefecture, an aging population and changes in lifestyle have meant that maintenance on a conifer forest near the village has not been possible. This has resulted in decreased CO<sub>2</sub> absorption capacity and reduced landslide prevention capability. Support from the Eco Card Fund is the starting point for making this satoyama (village forest) a place where various people can gather. Apart from forest maintenance including tree thinning, the timber that is derived from that thinning will be utilized. We also plan to conduct training and education activities to heighten awareness by local residents.



Chairperson  
Cosmo Oil Eco Card Fund  
Hiroshi Kiriya

## Message from the Chairperson With thanks to our Eco Cardholders

Thanks to all our cardholders, the Eco Card Fund is now in its 16th year. I would like to take this opportunity to express my sincere thanks to all the cardholders who constantly support the fund.

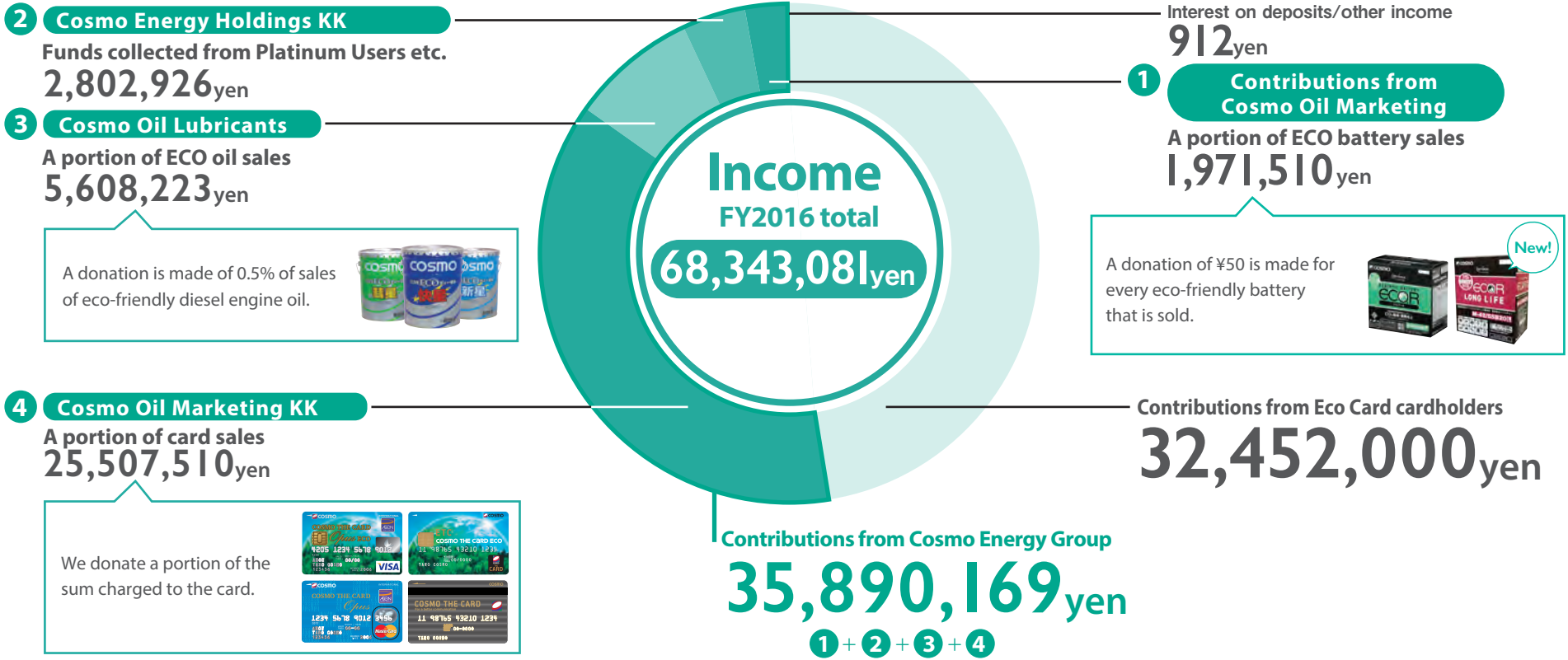
In 2016 the Paris Agreement came into force. This agreement resulted from many countries around the world deciding to undertake efforts to combat climate change. Within Japan also, it is anticipated that society will become increasingly more interested in the global environment.

Since its inception, the Eco Card Fund has addressed the issue of global warming which is a problem shared by both cardholders and our corporate group. We remain steadfast in our commitment to engage in activities emphasizing a balance of support for regional economic development and environmental protection in a way that links to fundamental solutions for environmental problems. We will continue as before to make efforts to fulfil the activity policy of the fund and stay firmly grounded as we undertake these activities while also paying attention to social currents and the views of our cardholders.

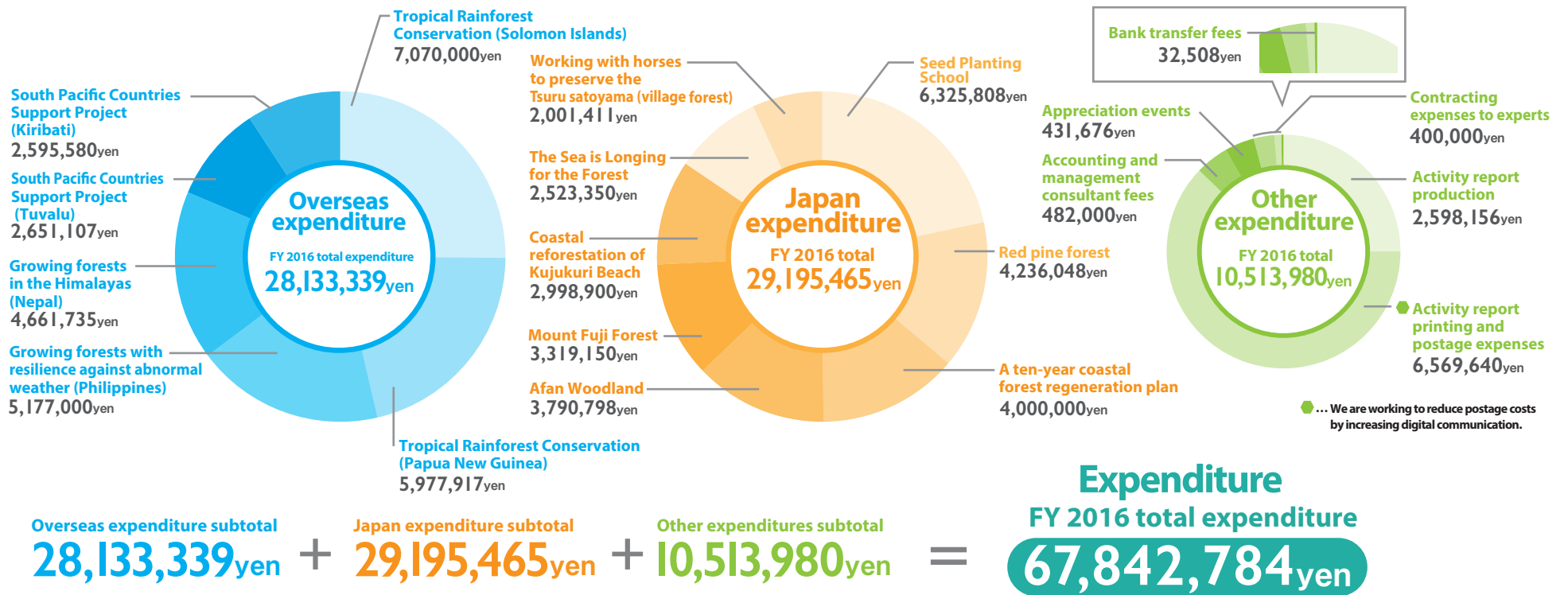
I look forward to your continued support.

## Income and Expenditure Report

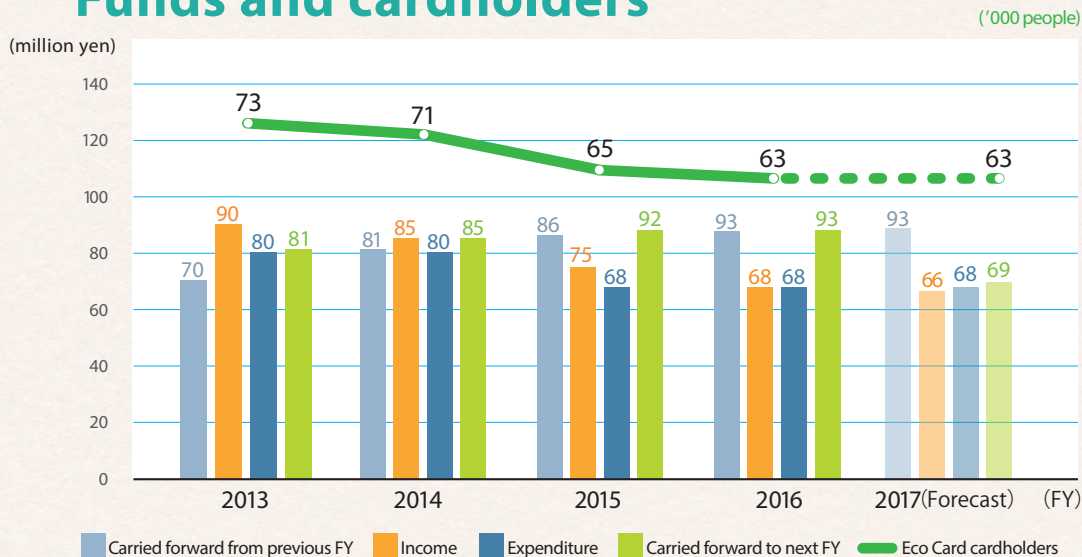
### Income Section



### Expenditure section



## Funds and cardholders



### Broadening the circles of our eco activity support.

#### Strengthening activity implementation to increase member numbers.

- Commencing broadcasting TV commercials and promoting activities at petrol stations
- Conducting a membership campaign
- Utilizing Facebook and producing email newsletters

#### Aiming to increase cardholder satisfaction.

- Broadening project
- Starting to notify about events by inserting leaflet with invoice
- Reviewing content of appreciation events
- Conducting Eco Tours

We endeavor to conduct highly transparent management and an external auditor will conduct a review of the income and expenditure plan. The Cosmo Oil Eco Card Fund income and expenditure plan will undergo an accounting review by Mr. Toshiya Kato, a Certified Public Accountant who has no vested interest in the fund.