

Thank you Newsletter 2020 Activity Report

18th fiscal year: April 1, 2019 – March 31, 2020

We would like to express our gratitude for your support of the Eco Card Fund. Your commitment has always been a great help to the Fund's activities, and many messages of appreciation have been received from our project partners as well as people and communities around the world involved in these activities. We would expand our activities further with a view to achieving a low carbon, resource circulating society, and we profoundly thank you for your continuing support.



Thoughts behind the Eco Card Fund

While oil brought us this comfortable lifestyle, it is also a fact that oil has been placing a burden on the environment. From as early as the 1990s, we, COSMO, have been addressing environmental concerns, and set up the Eco Card Fund, one of our initiatives to face the issue, through conducting various activities that we call "Living on the Earth Forever Project." For many years, we have also contributed to the resolution of fundamental problems such as poverty through supporting activities that address climate change and protect the ecosystem.

2021 will be the 20th year for the Eco Card Fund. At this milestone, while continuing to engage in ongoing environment conservation projects, we would like to ramp up our initiatives towards promoting a low carbon, resource circulating society for the sustainability of the earth.

With this direction in mind, we are starting projects to develop and promote renewable energy, and to nurture the next generation.

These unwavering thoughts and initiatives are for the benefit of society and the future. The Eco Card Fund will forge ahead in step with all its members.



Fiscal 2020: New projects have started!

In fiscal year 2020, we have started supporting activities for educating children and local communities as well as projects that address renewable energy usage with a view to strengthening activities directed at achieving a low carbon society. We look forward to your continuing support.

Miyagi

Partner: Spatto Naruko Hot Spring Renewable Energy (NPO)

Living with the geothermal heat of Naruko Onsen

Making greater use of the power of hot springs to support livelihoods, this activity to establish local production of energy for local consumption.

At Naruko Onsen in Miyagi Prefecture, disconnection of the power lifeline following the Great East Japan Earthquake heightened awareness of local production of energy for local consumption. The focus turned to utilizing renewable energy in the form of the geothermal power that is unique to hot spring areas. When establishing utilization of geothermal power, it is important to foster a perspective that assists regional development through educating the children who will be future community leaders. As a specific approach, we are providing educational programs through school visits to elementary and junior high schools, where children learn about hot spring heat, which is a familiar form of energy. Looking to the future, we would like to further contribute to regional revitalization by developing this program into energy and eco-tourism business.



Scenes of 2019 activities

It makes us happy to see how classroom lectures, experiments and facility tours can change children's faces from puzzled looks of "What?" to happy looks of "Ah, really! Oh, wow!"



From left: Prof. Atsushi Muramatsu, Mr. Atsushi Kishita, Mr. Takashi Takahashi, Mr. Shoji Kikuchi, Mr. Souichi Yusa, Mr. Shinsuke Kikuchi, Mr. Keiji Sasaki



Thank you to all Eco Card Fund members. Young and old are cooperating to protect Lake Biwa and the global environment.



Mr. Michio Kumagai, Mr. Yasuaki Aota and participating elementary to high school students.



Shiga

Partner: Biwako Trust (Authorized NPO)

Learn, protect, connect the waters of Lake Biwa

Together with the children, we will consider the effect of global warming on lakes and seek solutions to the problems.

Are you aware that global warming is having a negative impact on the environment of Lake Biwa? Since 1990, with rapid increases in water temperatures, the natural phenomena known as "Lake Biwa's deep breathing" came to a standstill in the winter of 2019. This means the creation of an environment where creatures living at the bottom of the lake find it difficult to survive. To convey this reality to children and to think about it together, we are first planning a program to build a solar boat where children can experience the amount of solar energy entering deeper water through the surface, and understand the full cycle. We aim to seek methods of problem resolution by involving the local community, with a focus on children, as well as prefectural and national administrations.

* A phenomenon where water near the lake's surface containing high levels of oxygen and water from the lake's bottom replace each other.



Scenes of 2019 activities

Project Report for FY 2019



In Japan!

Nationwide projects where communities and volunteers work together. Here are their reports and words of gratitude.

- **Miyagi** - The Sea is Longing for the Forest: planting trees to protect the sea
- **Chiba** - Returning the coastal forest of Kujukuri Beach to its pre-disaster state
- **Kanagawa** - Thinning bamboo groves to restore Kamakura forests
- **Nagano, Miyagi** - The C.W. Nicol Afan Woodland and forest growing in Higashi Matsushima
- **Hyogo** - Yasuga Irodori Forest, where people and animals live in harmony
- **Miyagi** - A ten-year coastal forest regeneration plan
- **Tokyo** - Turning Hachioji's satoyama into a bright forest
- **Shizuoka** - Protecting and regenerating the forests of the Mount Fuji World Heritage Site
- **Wakayama** - Creating forests where biodiversity can be experienced
- **Tokushima** - Satoyama preservation by local residents in Kamiyama



Miyagi The Sea is Longing for the Forest: planting trees to protect the sea



Support funding
¥3,262,696

Tree Planting Festival participants
1,400

Thanks to your support, deciduous hardwood forests are expanding and nurturing the Sanriku Sea. Thank you.

We held our annual Tree Planting Festival and focused on spreading information via SNS. Nature in the whole drainage basin, including rivers and forests, is crucial to the ocean's harvest such as oyster farming in Kesenuma Bay. On June 2, we held our annual Tree Planting Festival to convey that importance. Seedlings were planted in the forest by 1,400 participants, helping to create a rich water source. We have also started a new nature observation event called, "Let's go into the forest." It was a year in which we focused on environmental conservation awareness using such means as SNS to proactively disseminate activity information.



Miyagi A ten-year coastal forest regeneration plan



Support funding
¥4,000,000

Planted area
20,000m²

A total of 350,000 black pines have been planted and are growing steadily, with the tallest reaching 4.5m

Leaving a coastal forest of black pines for future generations. Conducting educational activities and moving to grassroots activities. Most of the coastal forest made up of black pines was lost in the tsunami following the Great East Japan Earthquake. Last year a total of 1,878 volunteers participated in a project to restore this natural breakwater. While raising 35,000 seedlings in a plant nursery, we planted trees over a vast 20,000 m² area of coastline. We are aiming to conduct more grassroots activities building on last year, which included a briefing to local senior high school volunteers and holding a photography exhibition in the passageway of Natori Station.



Chiba Returning the coastal forest of Kujukuri Beach to its pre-disaster state



Support funding
¥2,996,463

Undergrowth clearing area
6,000m²

This is a project to regenerate the coastal forest of Kujukuri Beach lost in the tsunami of March 2011. Thanks to 4 years of your support we have been able to restore around 10,000 trees of a disaster-prevention forest.

Volunteer numbers increase annually, helping to plant trees and clear undergrowth. It is not well-known that scars left by the Great East Japan Earthquake are also visible here in Chiba Prefecture. Numerous trees have died as a result of salt damage from tsunami inundation. But thanks to the assistance of many volunteers, we have been able to plant about 60,000 seedlings. We continued planting last year and also cleared undergrowth in July and August. Perspiration-soaked participants commented that they had gained an understanding of the preciousness of coastal forest.



Tokyo Turning Hachioji's satoyama into a bright forest



Support funding
¥1,913,084

Maintenance area
15,000m²

We are restoring brightness to the satoyama. We invite Eco Card Fund members to join us.

Excess growth removed and thinned timber recycled for walking path repair. While numerous satoyama (village forests) still remain in the west area of Tokyo, if trees are not periodically removed or thinned, sunlight does not reach the ground, leading to a loss of biodiversity. So, together with volunteers, we removed excessive growth and effectively utilized the thinned timber. This timber was reborn as water channel reinforcement, and repair material for walking paths damaged by typhoons. It will be wood-chipped for walking path maintenance and other uses, assisting in the creation of a satoyama crowded with people.



Tokushima Satoyama preservation by local residents in Kamiyama



Support funding
¥2,500,000

Thinned timber utilization
53 trees

70 people participated in activities such as making nesting boxes using thinned timber, forest sauna experiences, and workshops on horse-plowing, horse-logging and lumberjacks.

The Finnish-style sauna has been completed. Thinned timber will be used as firewood. Forests that are neglected for many years are susceptible to landslides and fallen trees. As forests occupy almost 85% of the town of Kamiyama, an initiative was taken to reduce such risks while also further utilizing the satoyama (village forest). It started by cutting down trees that had reached a suitable age for logging. Then, in September, we built a Finnish-style sauna and use the thinned timber from the satoyama as firewood. We have had over 500 visitors inspect this unique project. It has also attracted wide attention including mention in university lectures.



Shizuoka Protecting and regenerating the forests of Mount Fuji, World Heritage Site



Support funding
¥3,121,725

Forest Maintenance Area
17,000m²

We are continuing activities to preserve beautiful Mt. Fuji for children of the future. Thank you for your support.

Volunteers joined to maintain two forests to prevent destruction of the forest ecosystem. Destruction of forest ecosystems due to various causes including a change in the relationship between people and the forest can be seen even at the base of Mount Fuji. Last fiscal year we implemented projects in two forests with support from the Eco Card Fund. In the Kitayama Industrial Park Forest, we cleared undergrowth to create a healthy forest environment and also held beekeeping and mushroom conservation workshops. At the Nishiusuzuka Agreement Forest, we have maintained another Mt. Fuji forest through setting up deer preventive fences in 100 locations to protect young trees from wild deer.



Nagano, Miyagi The C.W. Nicol Afan Woodland and forests growing in Higashi Matsushima



Support funding
¥2,778,964

Forest maintenance area
110,000m²

We are able to maintain a diverse, abundant woodland, thanks to your support.

Nurturing rich woodlands means nurturing souls that cherish nature. In the Afan Woodland at Kurohime in Nagano Prefecture, we are helping unattended forests return to their original form. Spring begins with disposing of the trees that have collapsed under the weight of snow. From summer, we continuously cut undergrowth and pruned. Our steady activities have resulted in the identification of 58 endangered species. We also held a "Forest Observation Event" in the forests of Higashi Matsushima in Miyagi Prefecture. There were 81 participants, most of whom were children.



Wakayama Creating forests where biodiversity can be experienced

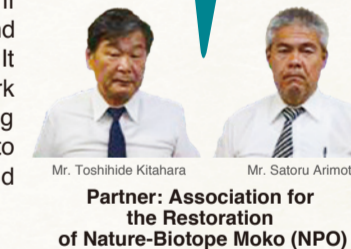


Support funding
¥1,251,300

Future Heritage Project
112 participants

Thanks to your support we have been able to continue children's nature observation activities and the Future Heritage Project. Thank you.

Children enjoying playing among nature are taking interest in environmental conservation. An area of 30,000m² located in Mokofudodani in Wakayama Prefecture is currently the habitat for the Japanese brown frog and Hynobius setouchi (Setouchi salamander). This project aims to have children understand the importance of nature and to conserve it for the future. It involves clearing undergrowth around a biotope. This work has been rewarded by 40 species of dragonfly being identified in an ecological survey. Our activities to convey to children the enjoyment of playing in nature were attended by 112 children.



Kanagawa Thinning wild bamboo groves to restore Kamakura forests



Support funding
¥1,519,912

Total participants
887

Thank you for your support. Regenerating forests is a very long-term activity and this year also we will do our best for reshaping the forest.

We want to protect the forests of Kamakura inherited from ancient times. That intent is now spreading to the younger generation. In scenic Kamakura, numerous young people are participating in a project to protect broad-leaved, evergreen forests from excessive bamboo growth. Despite a long period of rain and severe heat, 339 people toiled hard throughout the year to remove and thin the bamboo groves. Enthusiasm is increasing with 141 people joining tree planting activities that started with making acorn seedlings, and 407 people attending a "Forest classroom" held at kindergartens and other locations.



Hyogo Yasuga Irodori Forest, where people and animals live in harmony



Support funding
¥2,500,000

Thinned timber use
200 trees

We are moving from satoyama resource recycling to a sustainable local society. We will hand over the Irodori Forest to the children of the future.

We are planting flowering shrubs like hydrangeas to make the satoyama (village forest) feel more accessible. Do you know that satoyama (village forests) form the boundary between people and animals? Creating a properly maintained satoyama as a buffer zone helps prevent damage to villages by wildlife. For that purpose, with volunteer assistance, we have been steadily thinning out trees and clearing undergrowth. The thinned timber has been converted to woodchips and utilized in products such as fertilizer. And to make this satoyama feel more accessible, we also held a tree planting festival to plant hydrangeas and peonies. One hundred flowering shrubs have taken firm root.



Overseas!



Thanks to your support, eco-projects are spreading worldwide.

- Solomon Islands - Tropical rainforest conservation
- Papua New Guinea - Tropical rainforest conservation
- Republic of Kiribati - South Pacific countries support project
- Tuvalu - South Pacific countries support project
- Nepal - Ken Noguchi: growing forests in the Himalayas
- Philippines - Growing forests to withstand unusual weather
- Thailand - Creating forests with Asian honeybees



Solomon Islands Tropical rainforest conservation



Growing cocoa beans at a vocational school. New efforts to protect the environment and support lives.

The support projects here in the Solomon Islands require resolution of two conflicting issues: attaining a rich life without burdening the environment. With 187 enrolments last year, this lively vocational school has embarked on a new initiative of opening a trial cocoa bean farm. The intention is to establish a business model that includes all aspects from cocoa bean production to processing and then sales, and to develop this into a new local industry.

2019 Graduates of the Permaculture Center
Partner: APSD (NPO)

Support funding
¥7,920,000

Trial farm opening

200m²

This year, around 100 graduates left us after studying the environment and development. We are grateful for your warm support.



Papua New Guinea Tropical rainforest conservation



Changing lifestyles to slow environmental destruction. The power of women is also a driving force.

What is required to have the local people escape from practices such as environmentally destructive slash-and-burn farming? The answer is providing food self-sufficiency and finding a stable income source. We have tried various ways, supported by the Eco Card Fund, and one of those was providing vocational support to women. We conducted sewing classes and training in making soap and peanut butter. The enthusiasm of participants makes these very fruitful initiatives.

Mr. Michikatsu Ehara
Partner: OISCA (NPO)

Support funding
¥6,116,800

Female training participants

28 people

Helping improve the lives of farmers who are desperately conserving tropical forests which are home to diverse flora and fauna. Thank you for your support.



Republic of Kiribati South Pacific countries support project



Local children, Japanese university students and many others join forces to plant trees.

This is a project to plant mangrove forests to protect local lives from the threat of seawater. Trees were planted last fiscal year to protect the road that connects the airport to the town from coastal erosion. Together with local children, university students from Japan and Ministry of Environment staff, we succeeded in planting despite the equatorial heat. In 2020, projects have been suspended due to the coronavirus, so disappointingly we did not reach our target planting numbers.

Ms. Mio Kezuka, Ms. Eriko Tamashiro, Ms. Nozomi Oshiro
Partner: International Society for Mangrove Ecosystems (NPO)

Support funding
¥1,946,008

Mangrove planting

3,680 saplings

Mangroves to curb coastal erosion were planted with children and locals. They are showing robust growth.



Tuvalu

South Pacific countries support project



On these small islands, this activity has become well embedded, along with the mangroves.

With the proactive participation of locals, tree planting activities on Tuvalu delivered steady results last fiscal year. One achievement is that locals are now able to independently manage the whole process of collecting mangrove seeds, cultivating the saplings and planting the trees. Local interest and expectations are increasing, as evidenced by the attendance of the Prime Minister of Tuvalu at the October workshop.

From left: Ms. Perpetua Latasi, Ms. Susan Tupulanga, Ms. Kyoko Kawajiri, Mr. Iohas Phakawae, Ms. Fasitara Nemofo, Ms. Phatoup Simeti
Partner: Tuvalu Overview (NPO)

Support funding
¥2,493,629

Mangrove planting
11,246 saplings

Activities have been expanded, with a focus on youth groups. Your generous support is creating Tuvalu's future.



Nepal

Ken Noguchi: growing forests in the Himalayas



Local staff have upskilled to meet the goal of planting 100,000 trees.

Activities of the last fiscal year started with building a fence to protect the trees from being grazed by Yaks (part of the bovine family). Following that we succeeded in planting 12,000 seedlings including fir and pine. The fence was effective and the seedlings have been steadily growing. When the NPO representative director, Mr. Ken Noguchi, visited the site, he also focused on education for this activity. Now, as a result, smooth management is being achieved with local staff alone.

From left: Mr. Pasang Dawa Sherpa, Mr. Biruh Barol, Mr. Ken Noguchi, Mr. An Talke Sherpa
Partner: Peak Aid (NPO)

Support funding
¥5,305,950

Trees planted
12,000 trees

We are successfully growing seedlings at an altitude of 3,400m. Thanks to everyone's support, Himalayan forests are being revived.



Papua New Guinea Tropical rainforest conservation



Changing lifestyles to slow environmental destruction. The power of women is also a driving force.

What is required to have the local people escape from practices such as environmentally destructive slash-and-burn farming? The answer is providing food self-sufficiency and finding a stable income source. We have tried various ways, supported by the Eco Card Fund, and one of those was providing vocational support to women. We conducted sewing classes and training in making soap and peanut butter. The enthusiasm of participants makes these very fruitful initiatives.

Mr. Michikatsu Ehara
Partner: OISCA (NPO)

Support funding
¥6,116,800

Female training participants

28 people

Helping improve the lives of farmers who are desperately conserving tropical forests which are home to diverse flora and fauna. Thank you for your support.



Philippines

Growing forests to withstand unusual weather



Making local youth environmentally aware - that is the first step in creating forests rich in biodiversity.

On the island of Luzon in the Philippines, deforestation is increasing the risk of landslides and there is a gradual loss of biodiversity. Towards a long-term resolution of this problem, in addition to activities to plant native species adapted to the local climate and fruit trees, efforts are also being made in environmental education. 447 people, mainly students, attended a workshop on recovering forests rich in biodiversity. This workshop fulfilled a vital role as a setting for communicating the importance of protecting forests.

Dr. Mario G. Lopez and a group of locals
Partner: OISCA (NPO)

Support funding
¥6,138,954

Workshop attendees

447 people

Strong forests, rich in biodiversity, are gradually forming. On the other hand, there are numerous wildfires, and the life-threatening battle continues.



Republic of Kiribati South Pacific countries support project



Local children, Japanese university students and many others join forces to plant trees.

This is a project to plant mangrove forests to protect local lives from the threat of seawater. Trees were planted last fiscal year to protect the road that connects the airport to the town from coastal erosion. Together with local children, university students from Japan and Ministry of Environment staff, we succeeded in planting despite the equatorial heat. In 2020, projects have been suspended due to the coronavirus, so disappointingly we did not reach our target planting numbers.

Ms. Mio Kezuka, Ms. Eriko Tamashiro, Ms. Nozomi Oshiro
Partner: International Society for Mangrove Ecosystems (NPO)

Support funding
¥1,946,008

Mangrove planting

3,680 saplings

Mangroves to curb coastal erosion were planted with children and locals. They are showing robust growth.



Thailand

Creating forests with Asian honeybees



Making flowering tree seeds through pollination activities. "Afforestation without planting" is well underway.

The Eco Card Fund is assisting the protection of rapidly disappearing tropical rainforests in northwestern Thailand. This is an initiative called "Afforestation without planting." It involves having pollination activities of the Asian honeybee assist the cultivation of flowering tree seeds. Last fiscal year, locals were trained, made 60 beehives and installed them in a newly built hut. This represents a major first step towards achievement of agroforestry where the whole village cooperates to pursue agriculture while protecting the forests.

Japanese youth, university students in Thailand and residents of Maemom village who participated in the local summer study program.
Partner: GONGOVA (NPO)

Support funding
¥2,500,000

Apiculture workshop participants

85 people

We made 60 beehives, built one small hut to house the beehives, and planted 130 seedlings. We are grateful for your support.



How the Eco Card Fund works

I want a convenient and comfortable life, but using oil causes CO₂ to increase.



In that case, the Eco Card Fund will suit you.

Our donations are used to help activities that reduce CO₂.

Your donations

Donations from the Cosmo Energy Group

This fund supports projects for global environmental conservation and education

Eco Card holders

¥500

is automatically donated every year to the Eco Card Fund*1

New

With a contract with Cosmo Denki Green

New

Anyone who wishes to donate from their Carlife Square App

A donation in ¥500 units is made to the Eco Card Fund*2

Eco Card holders

Cosmo will donate 0.1% of your payment to the fund



Every time you refuel or wash your car with the Eco Card*3

The Cosmo Energy Group

Cosmo will make a donation of ¥10 to the Eco Card Fund

Eco Card holders



For every Eco battery you purchase

The Cosmo Energy Group

Cosmo will automatically donate ¥1500 to the Eco Card Fund annually

Eco Card holders

If you are an Eco Card holder for more than 10 years and your annual payment via the Eco Card exceeds ¥200,000

The Cosmo Energy Group

Cosmo will automatically donate ¥1500 to the Eco Card Fund annually

(Funds collected from platinum users)



*1 Cosmo Denki Green: Cosmo Oil Marketing Co. Ltd will allocate a donation of ¥500 per year per contract from electric power business sales.

*2 Cashback points can be donated in units of 500 points

*3 Refueling is calculated at the member price

Topics!

Many years of continued support for “Solomon Islands Projects.” One of those is commercialization leading to self-reliance.

In the second half of the 1990s, ethnic disputes intensified in the Solomon Islands due to wealth inequality. Food shortages worsened and environmental destruction was aggravated by deforestation and slash-and-burn farming. It was 2002 when the Eco Card Fund started supporting APSD, which was working towards solving these problems. Underlying the environmental issues was the reality that without cutting down trees, they could not make a living. APSD, believing that this required a long-term project to improve living standards, set up a Vocational School (Permaculture Center) to build human resource capacity. It supports the move from slash-and-burn to stationary organic farming, and currently 200 students are studying agriculture and small industry. One project aims to commercialize agrochemical-free cocoa bean cultivation. We have started full-fledged product development to enable us to provide people in Japan with chocolate made from cocoa beans grown in the Solomon Islands.



Eco Card Fund

Support

Environmental Conservation Project

Training people at a vocational school to move from slash-and-burn to stationary organic farming.

Balancing environmental conservation and financial independence

Independence

Commercialization of high-percentage cocoa chocolate (Fair trade products)

Income and Expenditure Report

Income Section

Interest on deposits
¥981

Other
Carlife Square App points
Cosmo Denki Green Members

¥45,500

Contributions from Eco Card holders
¥32,017,500

Annual donation of ¥500 by Eco Card holders

Income
Total for FY 2019
¥67,780,117

1 From ECO battery sales
Contributions from Cosmo Trade & Service
¥1,107,140

2 Funds collected from Platinum Users
Contributions from Cosmo Energy Holdings
¥8,089,500

3 From card sales
Contributions from Cosmo Oil Marketing
¥26,519,496

Contributions from Cosmo Energy Group
¥35,716,136
①+②+③

We donate ¥10 per sale of each eco-friendly battery.



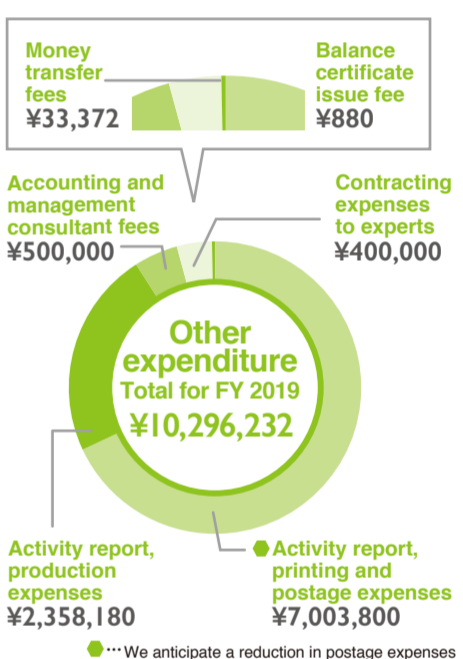
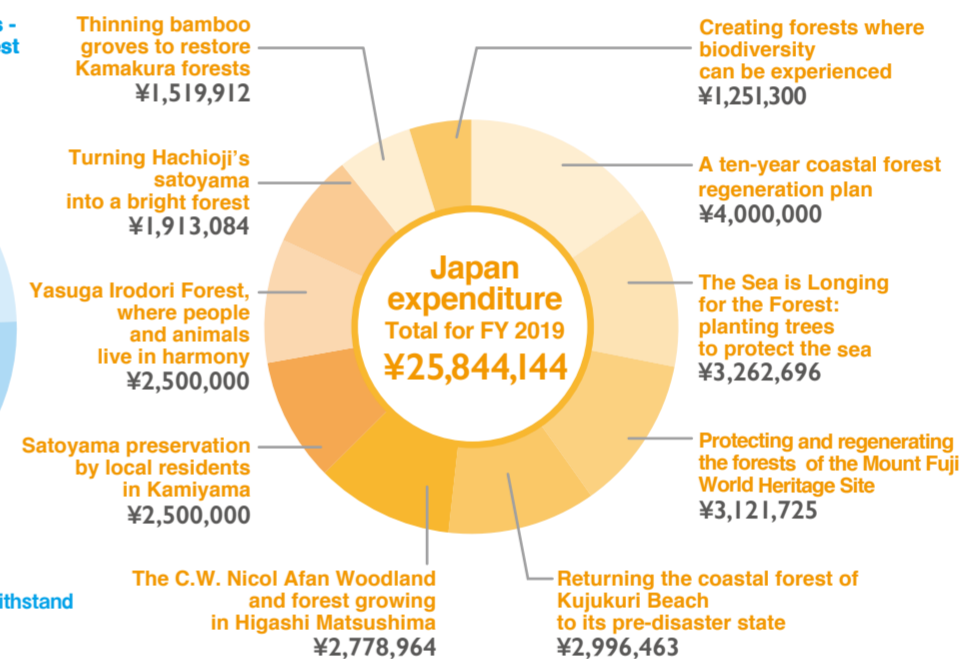
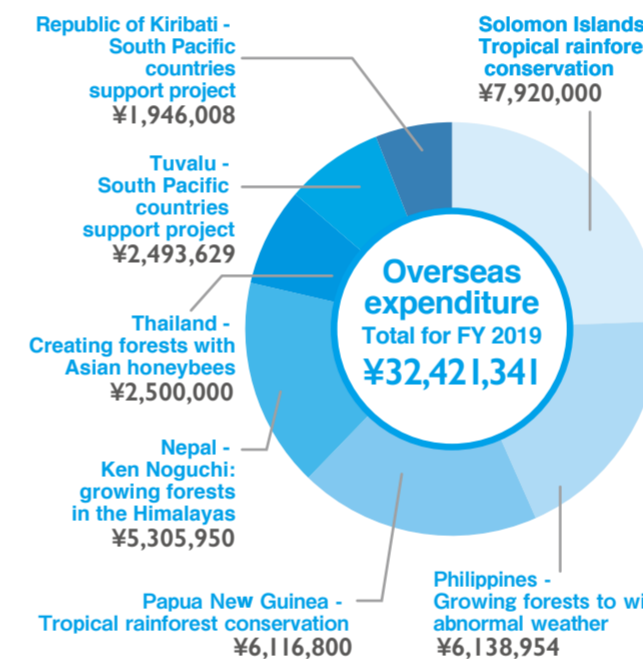
*With the exception of certain products, we donate ¥50 per sale of each Cosmo ECO.R Standard battery

We donate a portion of the sum charged to the card for refueling and car washing.



Income section Total for FY 2019
¥67,780,117

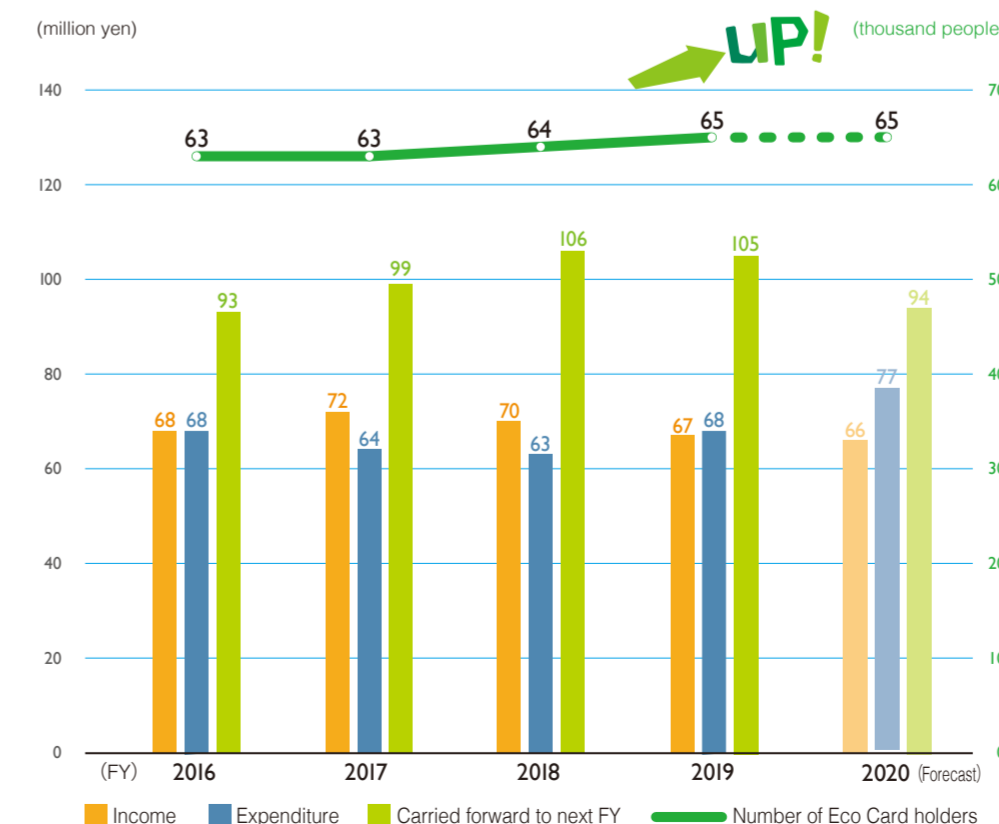
Expenditure Section



*We anticipate a reduction in postage expenses with digitization of the Activity Report from 2021.

Overseas expenditure subtotal ¥32,421,341 + Japan expenditure subtotal ¥25,844,144 + Other expenditure subtotal ¥10,296,232 = Expenditure section Total for FY 2019 ¥68,561,717

Funds and Eco Card holders



Message from Management



Chairperson, Cosmo Oil Eco Card Fund
Takayuki Uematsu

Thanks to all the members, the Eco Card Fund has marked its 19th year since its establishment. I would like to express my gratitude for your long-term support. In 2020, our lives, societies and economies have been severely impacted by the Coronavirus (COVID-19). No doubt some members have suffered from this both directly and indirectly, and I would like to express my heartfelt sympathy to you.

Eco Card Fund activities also have been significantly affected, resulting in unavoidable changes and suspensions. While these have been testing times, we are reminded how vital it is for “The world to unite and join forces to confront these difficulties.” Addressing global environmental problems is also a major challenge where continuing to join forces may lead to discovering clues for their resolution. The fund will continue to promote the “Living on the Earth Forever” project with you, and in addition, I would like to consider what we should do, and what we can do, to tackle the various ongoing issues that we are facing, and to conduct even more in-depth activities for the next generation.

2021 marks the 20th year of the Eco Card Fund, a major milestone. The Cosmo Energy Group will renew its determination, and we look forward to joining forces with all Eco Card Fund members in working towards the realization of “Living on the Earth Forever,” and by extension, achievement of Sustainable Development Goals.