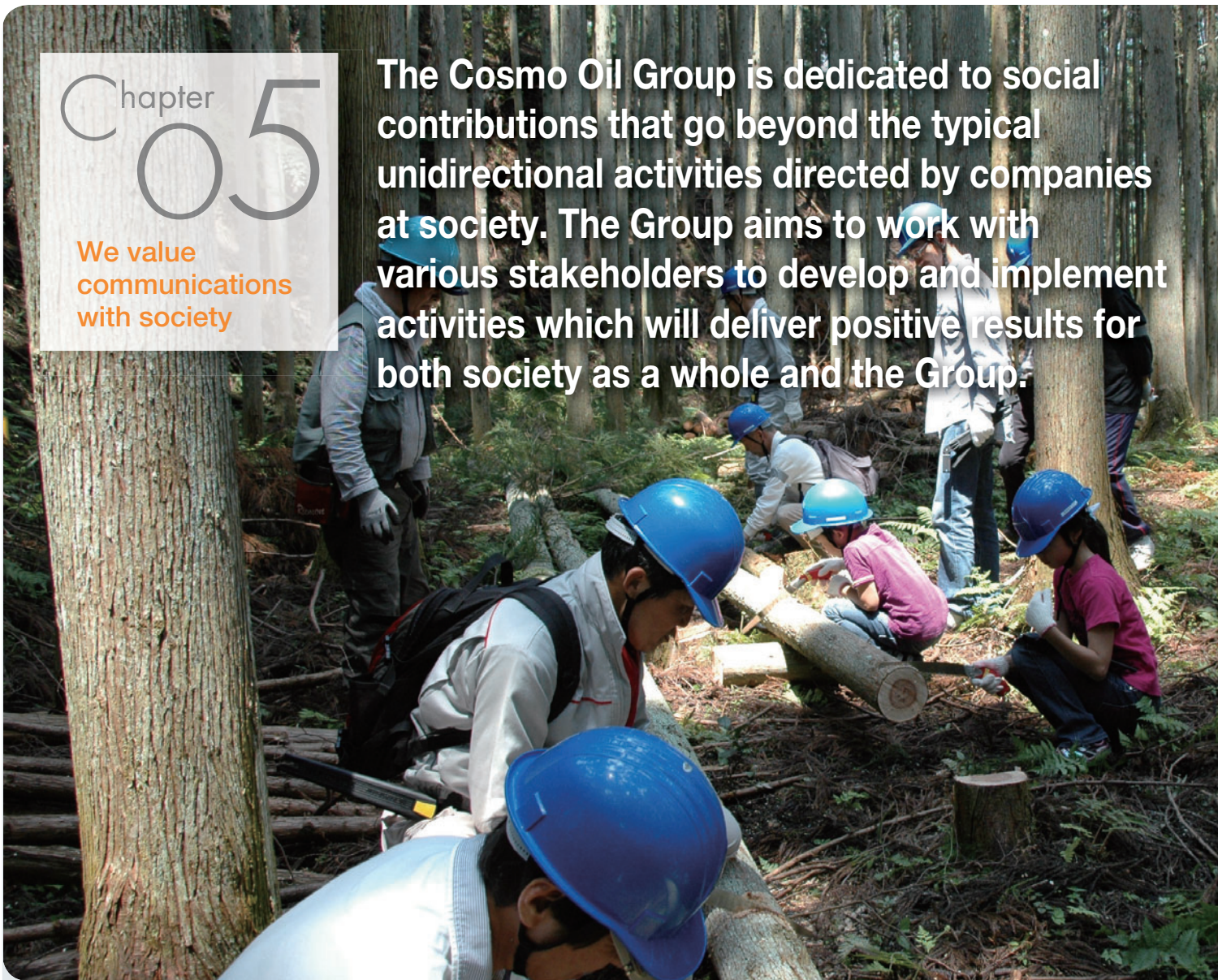


Chapter 05

We value communications with society

The Cosmo Oil Group is dedicated to social contributions that go beyond the typical unidirectional activities directed by companies at society. The Group aims to work with various stakeholders to develop and implement activities which will deliver positive results for both society as a whole and the Group.



Greater Opportunity for Employee Participation in Long-Term Social Contribution Activities

Cosmo Oil aims to help create a prosperous, secure society today and for future generations, focusing on activities that continue over the long-term and encouraging individual employee participation. To ensure that these activities are true to the Cosmo Oil spirit, the Company has instituted basic concepts and policies that shape its social contribution activities.

Basic social contribution activity concepts

- To educate children who will be part of the future society
- To preserve the global environment, the foundations of a sustainable society
- To form a peaceful, considerate, and cultural society

Basic social contribution activity policies

- Activities unique to the Cosmo Oil Group
- Full employee participation
- Lasting presence regardless of our business status

Cosmo Waku Waku Camp

Operated every year since 1993, the Cosmo Waku Waku Camp is a two-night, three-day nature camp for elementary school children orphaned by traffic accidents. Participating employee volunteers run through the camp schedule on-site beforehand to make sure that the children will stay safe and healthy while camping.



Art Program for Daddies and Kids

This program for fathers with children aims to promote fathers' participation in childrearing by offering opportunities for them to take part together in social contribution activities on days off. The program brings fathers and their children together to create artwork and foster communication. Employee volunteers organize the program with cooperation from local art museums.



Christmas Card Project

This project delivers encouraging messages to children whose long hospital stays keep them away from home on Christmas. Cosmo Oil Group employees and their friends and families participate by writing messages on Christmas cards. In 2010, 1,804 cards were delivered to 19 hospitals across Japan.





The Cosmo Oil Group values communication with society, recognizing this as an important aspect of earning society's trust. The Group seeks to foster a corporate culture that encourages individual employees to participate positively in social contribution activities as one opportunity for sincere, face-to-face dialogue. The Group will strive to communicate accurate information to ensure greater awareness of its initiatives in this arena.

Cosmo Forest Initiative Protects *Satoyama*



Toshihiro Itakura
General Affairs Section,
Sakai Refinery,
Cosmo Oil Co., Ltd.

The Cosmo Forest Initiative is a program that works with local governments to preserve *satoyama* near where the Cosmo Oil Group operates. It was introduced as part of the Group's management vision of "Harmony and Symbiosis with the Global Environment." The Fourth Consolidated Medium-Term Environment Plan incorporates even more activities of this type. To date, the initiative has already achieved significant results, including the Chiba Refinery working with Ichihara City in Chiba Prefecture, and Cosmo Matsuyama Oil Co., Ltd. signing an agreement with Ehime Prefecture.

In 2010, the Sakai Refinery endorsed the Sakai City environmental plan, adopting *satoyama* in Higashiyoshino Village as a Cosmo Forest. The official Cosmo Forest Initiative signing ceremony took place on May 21.

Group employees and their families undertook forest care activities three times between June 2010 and June 2011, with approximately 260 people participating. The volunteers divided into groups and, under the instruction of the local Yoshino forest association representatives, went to work thinning growth, trimming branches, and cutting grass. Following a morning of forest care activities, participating children spent the afternoon fishing and making *mochi* rice cakes the old-fashioned way with local residents. Everyone came away with a fun-filled experience of nature. Although the goal of the Cosmo Forest Initiative is to contribute to the environment, these activities also help to foster unity among Group employees and their families.

Cosmo Oil Eco Card Fund Marks Tenth Year of Activities in April 2011

Thanks to the cooperation of approximately 80,000 cardholders, the Cosmo Oil Eco Card Fund has developed "Living with Our Planet" projects to protect the irreplaceable global environment for future generations of children. Cardholders make automatic donations via the card using the mechanism shown in the chart below. The donations are used to find solutions to environmental issues and fund environmental preservation activities that focus on restoring and preserving the environment and educating the next generation. Preserving biodiversity was added as a new theme for Fund projects in fiscal 2010.

The Cosmo Oil Eco Card Fund System



Donations by all cardholders of Cosmo The Card Opus Eco and Cosmo The Card Eco

Cardholders make an initial ¥500 donation at the start of their membership. Every year thereafter they again donate ¥500 in the month that they initially joined.

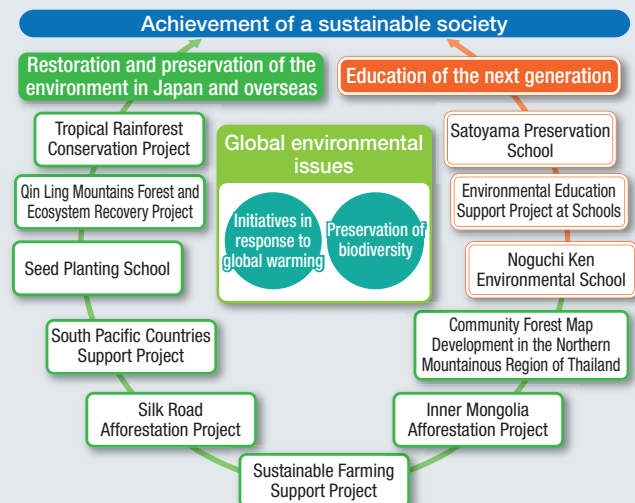


Donations by the Cosmo Oil Group



Operation of the "Living with Our Planet" projects that support efforts to contribute to the global environment

Fiscal 2010 Projects



Support was provided for 11 projects both in and outside of Japan in fiscal 2010. The *Cosmo Oil Eco Card Fund Activity Report 2011* released in July 2011 outlines the activities conducted under these projects.

Related information Environment

www.cosmo-oil.co.jp/eng/envi/